



WVSM

The important patient data you need,
where and when you need it

135



MULTIPLE PATIENT MONITORING

- WEIGHS JUST ONE POUND
- WIRELESS MONITORING RANGE OF 200 YARDS
- AUTOMATICALLY MONITORS SP02, HR/PR, NIBP, & ECG
- REMOTE CONNECTIVITY USING ADMS (ATHENA DEVICE MANAGEMENT SUITE)

athenagtx.com

ATHENA GTX IS COMMITTED TO BRINGING OUR CUSTOMERS THE BEST QUALITY AND MOST CURRENT PRODUCTS TO MEET THEIR NEEDS.

WIRELESS VITAL SIGNS MONITOR – (WVSM®)

The small and portable Wireless Vital Signs Monitor (WVSM) collects the data you need to make critical decisions, even in remote, limited access, and multi-patient environments.

The WVSM allows a single caregiver to wirelessly monitor up to 20 patients simultaneously on a tablet, PC, or smart phone with Athena Device Management Suite (ADMS) via Wi-Fi, peer-to-peer network, or BLE.

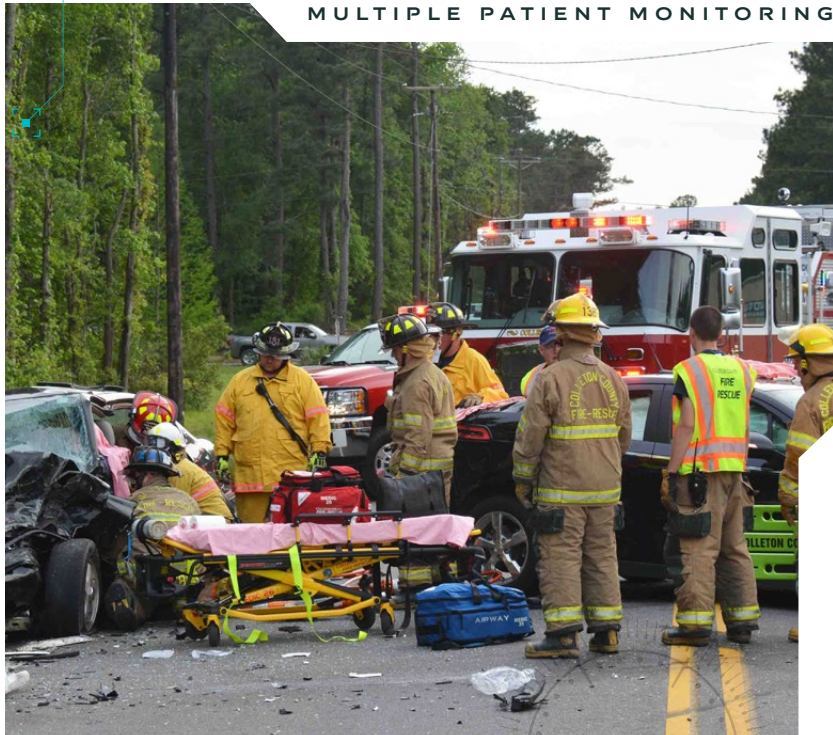


AN ELITE MONITORING SOLUTION

The ruggedized WVSM is ideal for patient monitoring in multiple emergency scenarios, both civilian and military. Lightweight portability enables live monitoring of vitals, from point-of-injury and throughout care.



PATIENT WORN SMALL DEVICE



MULTIPLE PATIENT MONITORING

HOW IT WORKS

Patient data is gathered automatically thus freeing a provider for other duties. Multiple providers can also access patient information on-scene via ADMS. EMTs and Incident Commanders can access the same information in near real-time to make informed decisions about triage and patient transport. All patient data is color-coded based on user set parameters enabling easy triage.

FEATURES

- Highly portable
- Wired or wireless connectivity
- Wireless range of up to 200 yards
- Turn key solution with all consumables ready to deploy
- Stays with the patient from point-of-injury until treatment
- A fraction of the cost of a larger single-patient monitor
- Automatically records and transmits 4.5 hours of patient history
- Over 7 hours of battery life
- Measures NIBP, HR/PR, SpO2, and ECG
- Color-coded vitals provide the data medics need without overwhelming first responders



APPLICATIONS

- FIRE REHAB
- EXTRICATION
- TRIAGE/MCI
- EMERGENCY DEPARTMENT
- HAZMAT
- HIGH ANGLE RESCUE
- INFECTIOUS DISEASE
- SEARCH AND RESCUE
- STRUCTURAL COLLAPSE

CONTACT US TODAY TO GET MORE INFORMATION

athenagtx.com | 515.288.3360 | sales@athenagtx.com